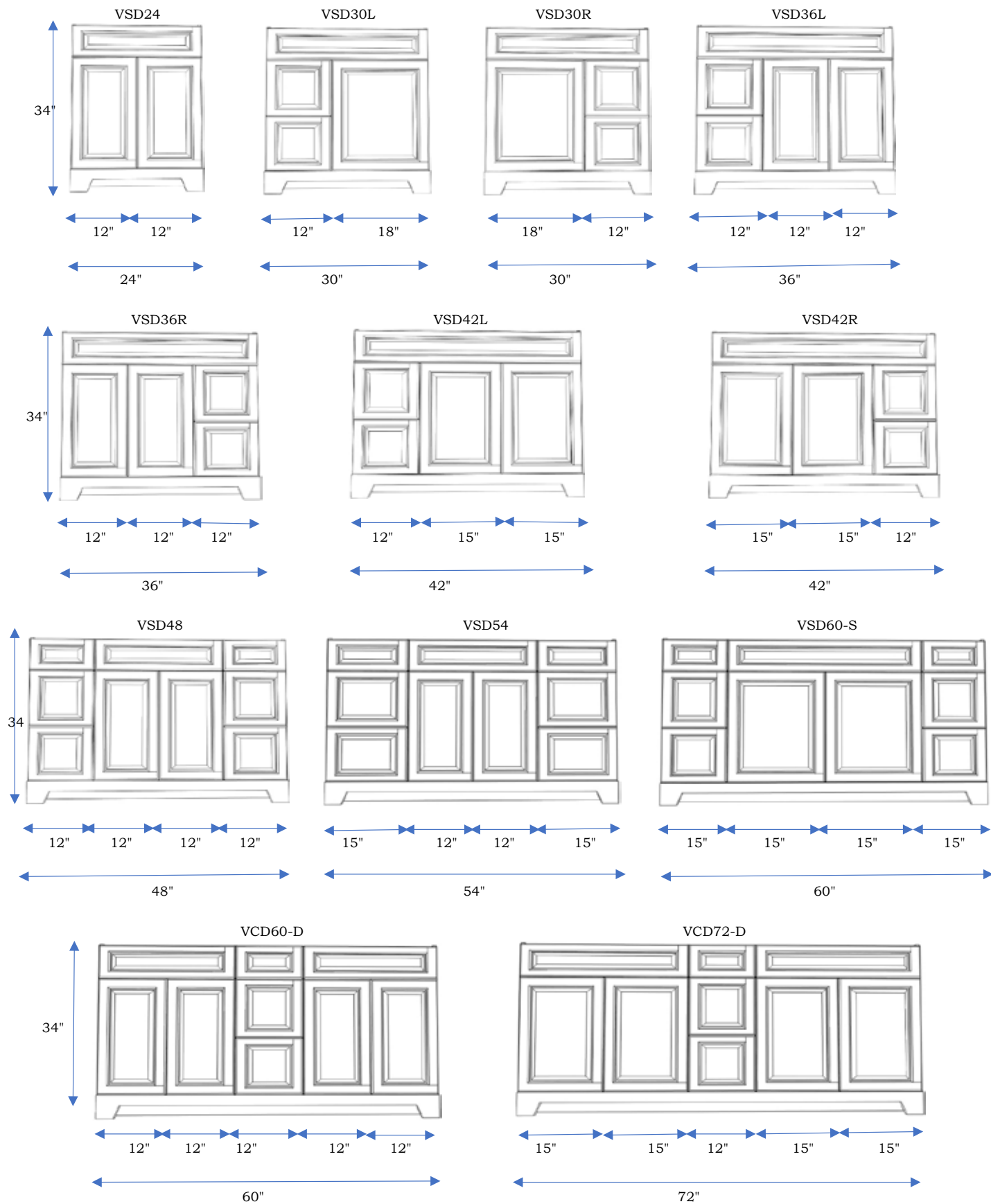


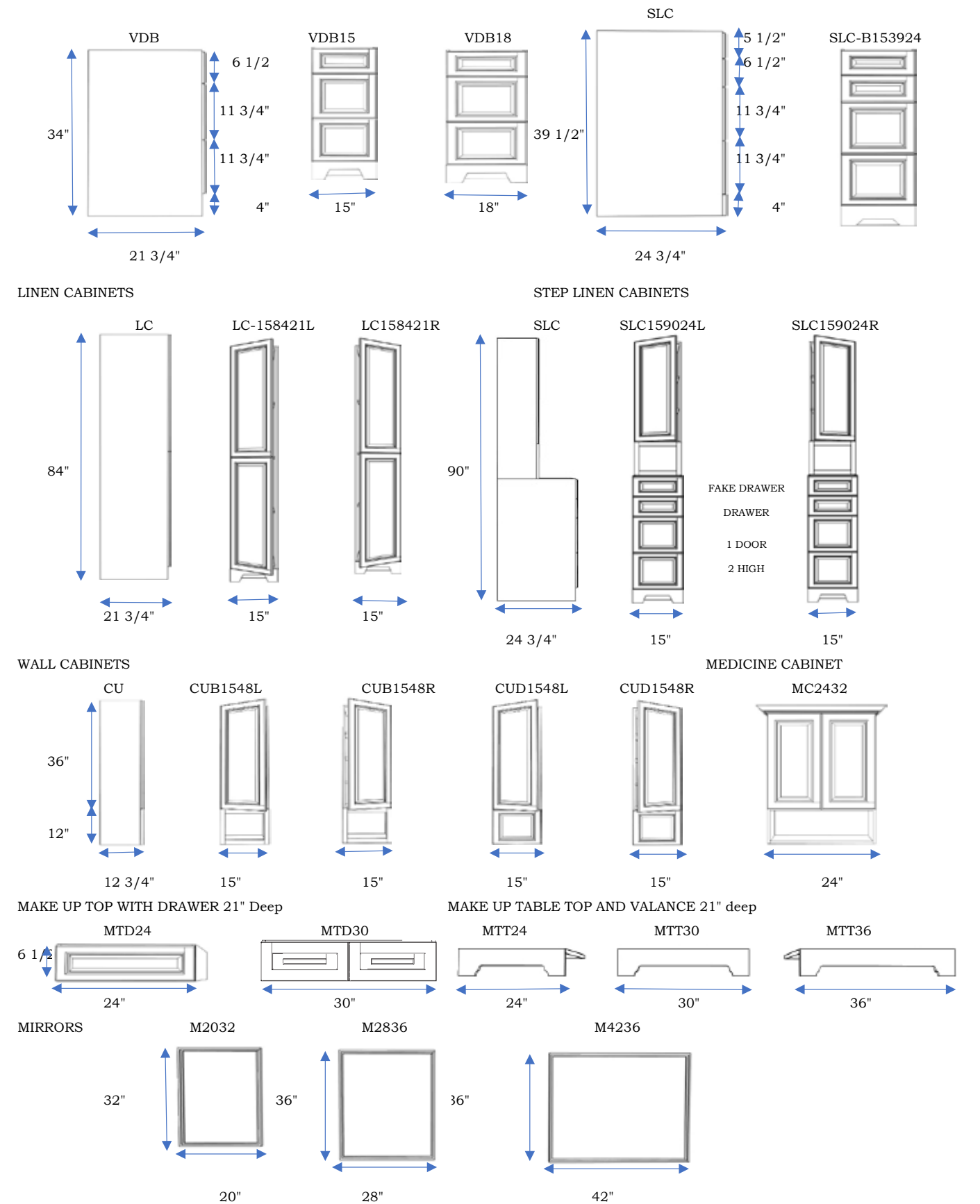
Cabinet SKU's & Dimensions

VANITIES



Cabinet SKU's & Dimensions

DRAWER BASE CABINETS



Mission Statement

Our mission is to provide quality products and services to exceed our customers expectations

We strive for continual overall improvement

We will stay current with design trends and continually look for new and innovative products, colors and designs

We will treat our customers as professionally and courteously as they would expect of us

We will deliver on our promise to provide the best possible customer service

Lastly, we will provide an equal opportunity work place for our employees

ClassicBrand Cabinetry is located in Mississauga Ontario

We have 75,000 square feet which includes warehousing, assembly lines, corporate offices and showroom

We are a proud contributor to habitat for Humanity

Cabinet Construction



Stands out from the competition

- Frameless structure
- Interior and exterior finishes match
- Solid maple cabinet doors, drawer fronts and drawers for all stained cabinets
- 3/4" plywood boxes and shelves
- Life time warranty soft-close, adjustable hinges for all standard cabinets
- Dovetail construction for all drawers
- Drawers have full extension, under mount soft-close glides
- Extra layer decorative furniture toe kick

Paints & Stains: We use Akzo Nobel
Plywood: We use Cabinet Grade Plywood which is well known for its easy machinability & screw holding strength. Its strength, uniform plies, thicker face & backing veneer ensure a higher quality finish

Our Mission

To supply Quality products. Always in Fashion.

Vanity Color Palette & Style
Step Shaker Door & Drawer Style

Vanity Color Palette & Style
Beveled Door & Drawer Style



PAINTED HDF
STEP SHAKER WHITE



STAINED MAPLE WOOD
STEP CHARCOAL GREY



PAINTED HDF
BERMUDA



STAINED MAPLE WOOD
JAVA



STAINED MAPLE WOOD
STEP GREY



PAINTED HDF
LONDON FOG



PAINTED HDF
MIDNIGHT BLUE

Vanity Color Palette & Style
Shaker Door & Drawer Style



PAINTED MAPLEWOOD
WHITE SHAKER

Beaded Door &
Drawer Style



PAINTED MAPLEWOOD
DOVE WHITE

Handles & Knobs

KNOBS



K02
Brushed Nickel



K03C
Polished Chrome



K04
Polished Nickel



K03
Brushed Nickel



K05
Brushed Nickel



K05C
Polished Chrome



K05G
Satin Matte Gold



K08B
Satin Matte Black

HANDLES



H02
Brushed Nickel



H03
Brushed Nickel



H04
Polished Nickel



H08B
Satin Matte Black



H05
Brushed Nickel



H05C
Polished Chrome



H05G
Satin Matte Gold

Step Shaker White



Step shaker door and drawer styles are a new twist on the conventional shaker style. This elegant and contemporary design will give a timeless beauty with a modern look

Step Shaker White





Grand
entry
manufacture





Bermuda White



Bevelled door and drawer fronts in a beautiful white finish an elegant and contemporary design. Timeless beauty with an updated modern look

Bermuda White





White Shaker



Traditional elegance with an understated beauty a timeless design, perfect for your grand bathroom



White Shaker

Dove White



Beaded door and drawer fronts finished in a white finish. A look that brings warmth and charm to any bathroom design

Dove White



Step Charcoal Grey



Step Charcoal Grey doors and drawers feature beautiful solid maplewood in a dark grey stain that shows the natural grain and variations of the wood



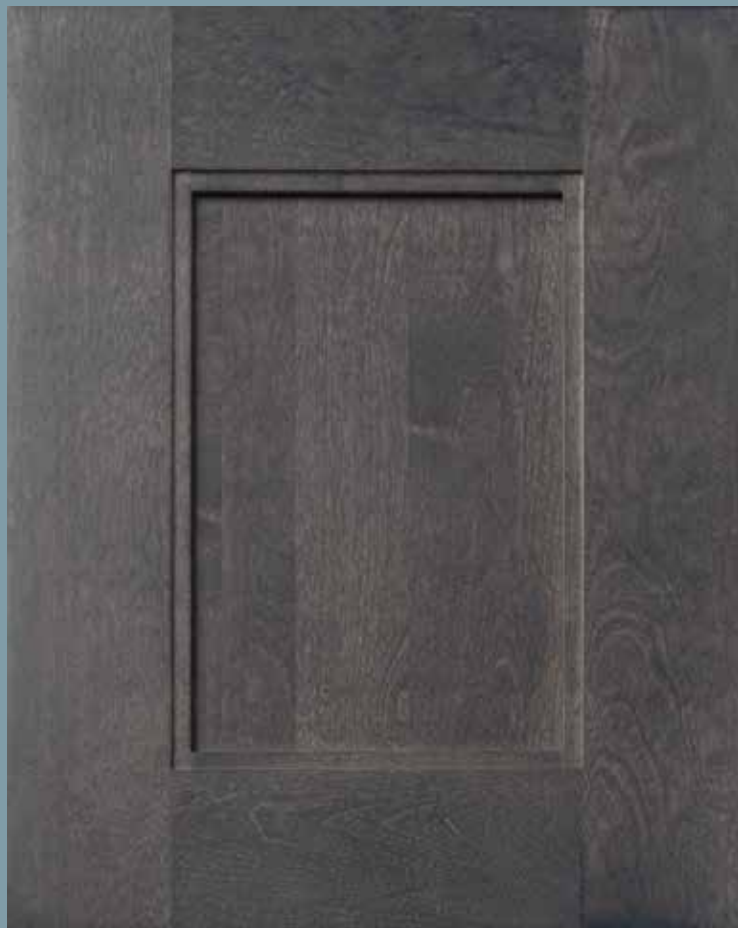
Step Charcoal Grey

Step Charcoal Grey





Step Grey



Step grey doors and drawers feature beautiful solid maplewood in a washed grey stain that shows the natural grain and variations of the wood







London Fog



London fog doors & drawer fronts feature a bevelled edge beautifully finished in a painted mid grey tone







Midnight Blue



Midnight blue doors & drawer fronts feature a bevelled edge beautifully finished in a painted dark blue tone



Midnight Blue

Midnight Blue





Java



Java features beveled door and drawer fronts beautiful solid maplewood doors and drawer fronts stained to show the natural grain & variations of wood



Java



ClassicBrand
Cabinetry



Care & Maintenance all Cabinets

With proper care, your cabinetry will provide a lifetime of use and satisfaction. Proper care includes providing a wood friendly environment. Many of the internal environmental issues that affect human comfort, also contribute to a wood healthy environment. Specifically, controlled temperature and humidity with minimal changes from day to day and season to season will ensure your comfort and they will ensure the stability and life of your wood cabinetry.

Moisture

Repeated short term exposure to excessive moisture such as splashing of surfaces from a sink or even a single longer term event such as flooding, WILL result in irreversible damage to wood cabinetry. Steam, from cook tops, crock pots and improperly sealed dishwasher doors, can cause problems as well. Moisture should be wiped from surfaces immediately, to minimize damage.

If wood has a chance to absorb excess moisture, efforts should be made to dry out the wood including substrates, immediately. A void direct high heat, use fans and dehumidifiers, moisture absorbing cloth and compounds.

Immediate attention reduces the amount of damage and also reduces the likelihood of mold and mildew.

Humidity

Wood expands as humidity increases and shrinks as humidity decreases. Solid wood will dimensionally change more across the grain than with the grain.

As wood expands (swells) and contracts with changes in humidity, the finish at the joints will crack.

This cracking is universal but is much more evident on light colored paint than on stains or dark paints.

Regardless, this is the nature of product made from wood and not a reason for replacement.

Where humidity exposure is uneven, pieces may warp, cup or bow.

Often, if the humidity level is returned to a normal level & maintained for a period of time, these issues will disappear.

Extremely dry conditions can result in wood parts splitting and /or cracking in addition to shrinkage as described above.

The optimal humidity level is 40% to 55% relative humidity. Extreme conditions (lower than 20% or higher than 80%) especially need to be avoided.

While most focus is on too damp or too humid conditions, too dry conditions can be equally damaging to cabinetry.

Extreme dry conditions can lead to cracking in solid wood components.

Under dry conditions, the insert panels in panel doors will shrink and the panel edges will be exposed.

The exposed, unfinished panel edges will not match the finished surface of the rest of the panel and door.

This is not a reason for replacement but is instead an indication that humidity levels are too low and need to be remedied.

Temperature

Temperature variation can cause some of the same problems as humidity variation and the two are often interrelated.

Temperature increases, cause materials to expand. Temperature decreases cause materials to contract or shrink.

Sudden temperature changes cause more dramatic material changes. More likely to lead to cracking and splitting in solid wood. More likely to lead to warping, cupping and bowing in any wood components.

Maintenance

Use dehumidifiers and/or air conditioners in summer to control excess humidity. Use a humidifier to keep the air from becoming too dry in winter. Maintain climate control during the off season of vacation homes to reduce the risk of damage.

Prior to installation do not store cabinets in a garage, basement or other unheated or unconditioned space.

Treat your cabinets like any fine piece of wood furniture and you will enjoy their beauty and natural look for many years.

Remember, preventative maintenance is the best form of maintenance.

Limited Warranty all Cabinets

Hardware — Slides and Hinges:

Classic Brand Cabinetry provides a limited lifetime warranty to the original purchaser that its drawer slides and door hinges to be free of defects in material and workmanship under normal use for the lifetime of the product.

Cabinets:

Classic Brand Cabinetry warrants its cabinetry to be free of defect in material and workmanship for a period of one year from the date of the original purchase. This warranty is limited to the original owner and is not transferable.

Natural Characteristics: Natural variations in wood (aging, wood knots, inherent growth characteristics) are part of the beauty of a natural wood product and are not a defect.

Relative humidity levels of 40% to 55% inside the home are required to prevent permanent damage, low moisture may cause doors and joints to shrink and open. If Relative humidity levels and temperature range does not reach

40% to 55%, 17-24° inside the home this warranty will be void automatically.

What is not covered by this warranty?

Our warranty will be void in the following circumstances.

- 1) Customer repairs or modifies original product without authorization from Classic Brand
- 2) Defects, Damages or Claims after installation will not be warranted. All products must be inspected for damage prior to installation. This applies as follows ; Cabinets that are secured in place, Stone Tops that have been sealed, Drawers and Doors with Handles/ Knobs installed.
- 3) Any damage caused by misuse, abuse, negligence, alteration, improper handling, storage or installation, non-residential use, wear and tear. If the product is subjected to abnormal use, abuse, eg: Heating/Cooling vents are placed under or in front of a cabinet
- 4) Product is installed in an environment without heat/cooling controls; eg: warehouse, cottage etc.

Limited Warranty Details

The warranty is expressly limited to replacing or repairing the defective part at Classic Brand Cabinetry's discretion.

It does not include any costs related to installation or delivery. When you receive your order, inspect your cabinets for damage or defects.

- 1) Classic Brand Cabinetry will replace any defective or damaged products that are claimed within 30 business days of receipt of the merchandise.
- 2) Classic Brand Cabinetry will replace all under warranty doors or drawer fronts that have cracks on the door/ drawer frame or door central panel at no charge.
- 3) Classic Brand Cabinetry is willing to repair all under warranty doors or drawer fronts after installation, that have cracks at the corner joints at our warehouse at no cost to the customer.

Quartz and Artificial Marble tops are a mixture of natural and man-made materials. There will be variances in veining, colour and grain pattern between the top you get and the small sample in the store or the pictures in this catalogue.

Hard water spots are caused by minerals in the water. Some municipalities have very hard water and this has been known to cause spotting. Drying the tops after using them will go a long way in avoiding water spots in the future.



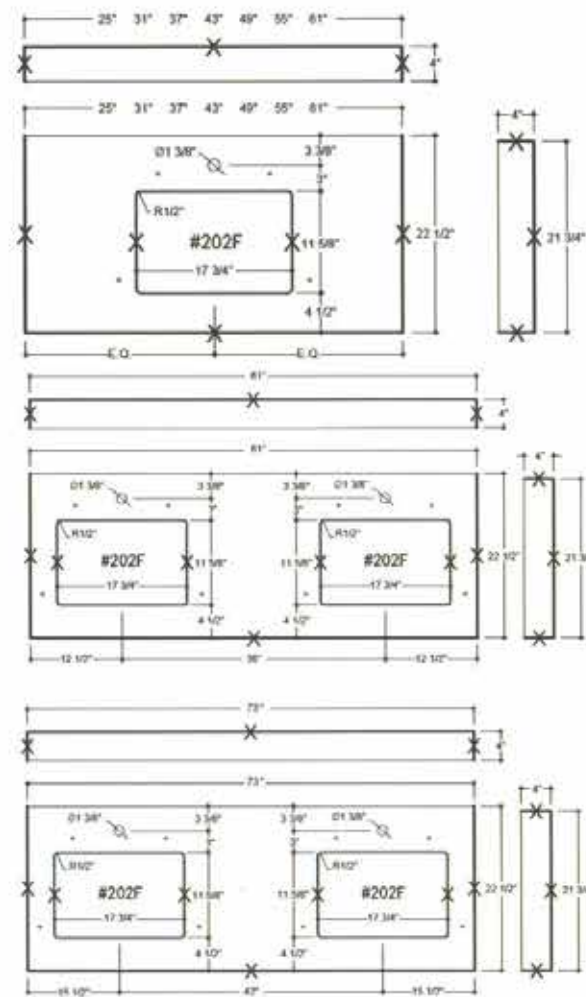
Sink-attached package

All vanity tops include 1 pc vanity top, 1 pc backsplash and 1 pc side splash. Sink attached in the same package.

Extra Side splash is available.



Vanity Top Dimensions



4" & 8" Faucet Center Hole Drilling Pattern

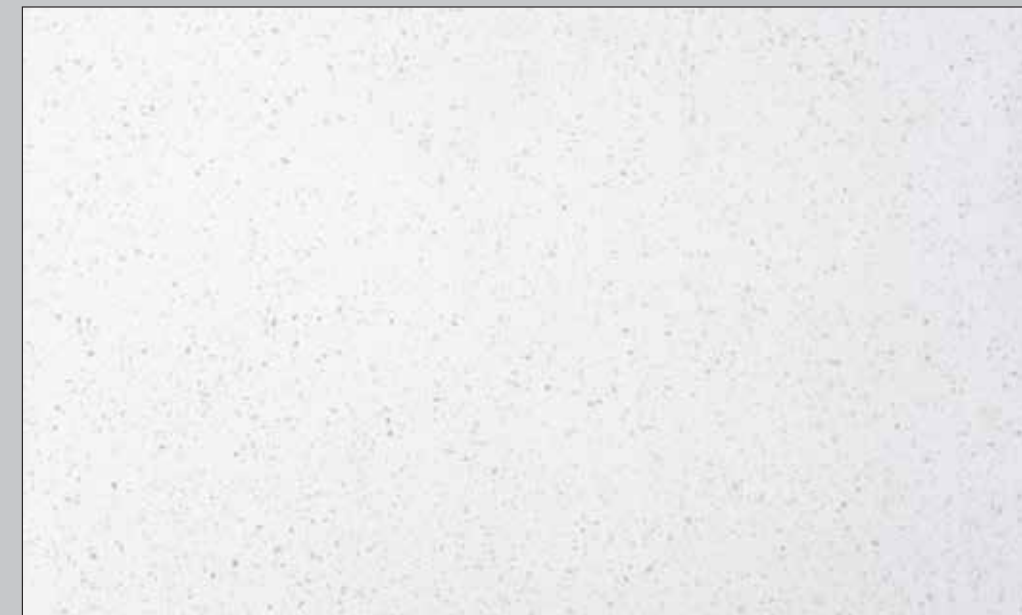


Countertops
2cm Regular Quartz



CHROME GREY

Countertops
2cm Premium Quartz



STARLIGHT

Countertops

2cm Premium Quartz



ARCTIC GLACIER



CLOUD WHITE

Countertops

2cm Premium Quartz



PURE WHITE



STORM GREY

Countertops

2cm Premium Quartz



SMOKEY HAZE

Countertops

2cm Premium Quartz



PEARL LATTE

2cm Artificial Marble



MIDNIGHT ICE



SILK BEIGE

Countertops
3cm Premium Quartz



LAVA GREY



SILK WHITE